



September

2021

Newsletter

Dear Parents/Carers

We are delighted to see all the children back and get back to something that resembles normality.

As we start the Autumn Term, we would like to update you on some of the policies, important dates and other news.

Covid-19 and Current Situation

When entering the school office porch, we would ask that you continue to wear a face mask or appropriate face covering, to minimise the spread of the virus within school.

Procedures for symptomatic testing remain the same - if your child has symptoms of Covid-19, a PCR/NHS Covid test will be required (**not** a Lateral Flow Test) and we require evidence of a negative test result to allow them to return to school. If your child is positive, they will need to isolate for 10 days. If someone else in the household is positive, your child would **ONLY** have to isolate for 10 days, or more if they develop symptoms.

Holidays Abroad

If you are planning a family holiday, please follow the Government guidelines, which are:

Red and Amber Countries

The 10-day quarantine period **must** be taken in to account as part of any holiday period

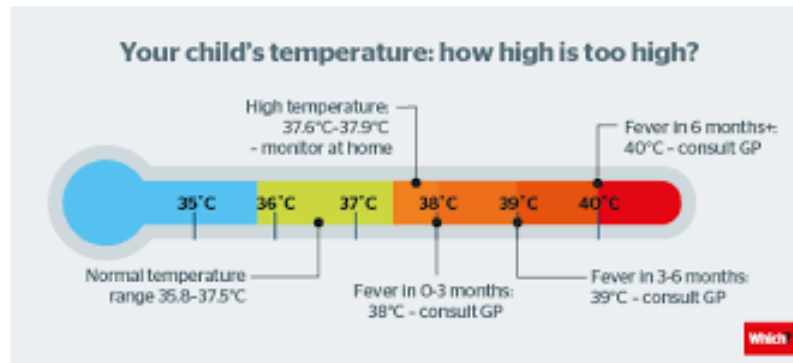


Please check the gov.uk for the latest guidance. Please note that it is very unlikely that requests for holidays during term time will be granted

Flu & Norovirus (Winter Vomiting Bug)

As we approach the winter months, the influenza vaccine will be offered by the NHS immunisation team, for eligible children on 12th October in school.

It has been reported that the Winter Vomiting Bug, has surged already since June and there are high levels of cases, may we remind you that if your child is unwell, they should remain at home until 48 hours clear of the last instance of sickness and diarrhoea.



Chickenpox, Shingles and Measles

One of our pupils is receiving medical treatment which puts them at risk if they are exposed to measles, chicken pox or shingles. Please let us know immediately if your child is suspected of having measles.

Our pupil is also at risk from chicken pox and would like to be given an injection within three days of contact. If your child is suspected of having chicken pox or there is shingles in your household you should let us know as a matter of urgency.

Your child is not at any risk whatsoever from this situation. However, the health and wellbeing of our pupil who is at risk, does depend on the co-operation of all other parents and we hope you can help us.

Uniform

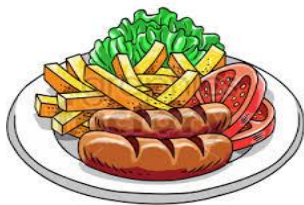
Please follow the school uniform and school PE Kit policy, details of which can be found on our website. **NO** jewellery will be allowed at all including earrings; the only exception to this is that children will be allowed to wear an inexpensive watch BUT not a smart watch.



School uniform is available to buy from Tots to Teams online shop

<https://totstoteams.com/schools/tow-law-millennium-primary-school>

School Dinners



School meal prices have increased to £2.15 per day. All dinner money must be paid for in advance using our ParentPay system.

As far as we are aware, the Government is continuing the Universal Infant Free School Meal scheme and so this will be continuing for KS1 children to receive a free school meal (that's Reception Class up to

Year 2).

If your child has moved into Y3 and you are not entitled to free school meals due to receipt of benefits, please remember that you must now pay for your child's dinners. If you believe that your child is eligible for Free School Meals, please ask the office for an application form.

Please note that you can provide your child with a packed lunch as long as it adheres to our Packed Lunch Policy a copy of which is on the website.

We are continuing to allow children to choose either a packed lunch or dinner daily for the rest of this term as it has been very popular.



School Photos



We have booked for Tempest Photography to come into school to take children's photos for you to purchase should you wish. In line with our Safeguarding Policy, please let the school office know if you do not wish for your child's photo to be taken, please email towlaw@durhamlearning.net. Further details will follow nearer the time.

Whilst we will be offering to take family groups this will be restricted to children who are attending our school.

After School Clubs

Class clubs will resume next week. Please note these will be held on Tuesday Night 3.15pm to 4pm, starting 14th September. Your child will bring home a separate letter for you to sign.

Booster Sessions will also resume next week and will take place on a Wednesday and Thursday 3.15 – 4.00pm. If your child is invited to attend you will receive a text message on Monday night to notify you.

Nursery

Current restrictions will remain in Nursery throughout the Autumn Term offering 15 hours per week, mornings only. However, we will be reintroducing our 30-hour provision from January 2022. If you are entitled to this and want to register your interest please speak to Mrs Linsley, Office Manager.

Key Stage Organisation

In September, our classes are currently:

Class	Year Group	Key Stage	No of Pupils	Teacher
1	Y5 / Y6	KS2	24	Miss Mawson
2	Y3 / Y4	KS2	33	Miss Dobson
3	Y1 / Y2	KS1	23	Miss Marr
4	Reception	EYFS	15	Mrs Boulton
	Nursery		4 N2 11 N1	

Birthdays

We are very happy to say that children are able to now, should you wish to, bring in a cake to celebrate their birthday with their friends.



Staff Leavers

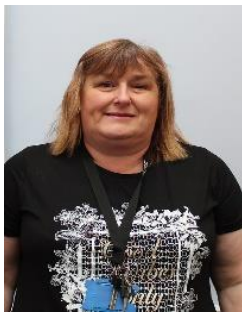
Sadly, Amy Bell will be leaving Class 4 at the end of term, she joined us in 2017 as an apprentice and has decided to move out of the area, to start a new chapter in her life. We all wish her well in future.



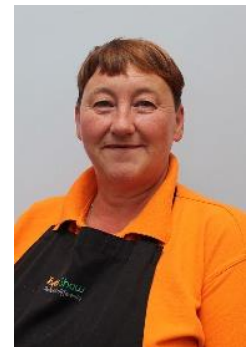
At the end summer term, Ann Scott the school secretary left us after 21 years of service, to take up a full-time post, whilst still remaining in the Education Sector. She was presented with flowers, cards and a gift and we all enjoyed a socially distanced gathering on the last day of term to wish her well in her exciting new role.

Amy Kirton, TA, also left to in the summer term. She is now an HLTA and we hope she is enjoying her new role but miss her at TLMPs.

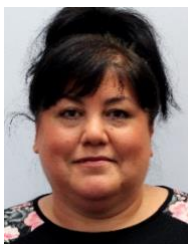
New Staff Appointments



We welcome Mrs Carol Thompson as our new Teaching Assistant who is currently working in Miss Dobson's Class 2. She is settling in well and is proving an asset to the team.



We also have a new Catering Manager, Mrs Nicola Shevels, who has worked for Taylor Shaw for several years. She is working very well with Elizabeth and together they are producing lovely meals for the school – service with a smile.



Mrs. Donna Walton, who has moved from her role as school cook to join the dedicated team of lunchtime supervisors who look after your children in the dinner hall and whilst playing over the lunchtime period. This is a role she did in the past so she brings with her lots of experience.

Contact Details

As ever, please ensure that we do have an **up to date** mobile phone number for you and that you keep this phone switched **on** during the school day. This is extremely important as we will need to get hold of you in an emergency. If you change your mobile number, please remember to alter it on ParentPay so you continue to receive texts and notify the school office of any changes to your home address, contact number and email address.

ParentPay



Please can all new nursery children activate their ParentPay accounts, login details were handed out last week to all parent/carers. Please contact the school office if you require another copy. Also the children that have moved from Nursery to Reception will need to activate their accounts. ParentPay is our main text message system, even though you may not have to pay for lunches, it is vital that you verify your mobile number, so that if necessary we can text you to alert you to any emergency, whether it is your child or a snow day etc.

Robinwood Activity Residential

We are really excited to announce that we have booked for all of Class 1 (Miss Mawson) Year 5 & 6 to go on a 3 day residential at the Robinwood Activity Centre from Wednesday 20th October to Friday 22nd October inclusive. Letters and all the details will be coming out to you shortly.



Time Capsule

In 2000, during the construction of the new school, children buried a time capsule near to the entrance. The capsule is one metre long and contains letters, a school badge, an imitation mummy, pens and pencils, old pennies, a toy alien and a behaviour certificate. There are no plans to dig the capsule up, it may be quite a while longer before it is discovered.



Wellbeing

We are pleased to share that we are continuing to work alongside the Piece of Mind Team this academic year (previously Mental Health Support Team). The Piece of Mind Team offer early help to children and young people who are struggling with mild to moderate mental health difficulties such as anxiety and/or low mood.



As well as working directly with children and young people, the team offer advice and guidance to staff members, parents and other professionals.

If you feel your child would benefit from support from support from the Piece of Mind Team or you would like additional information about the team, please contact Miss Dobson (Mental Health Lead) or Mrs Jackson to discuss further.

We would like to thank.....

The childminders - Ann Marie & Heather, who have worked so hard to continue to offer provision for children during the restrictions, we are glad you are part of the extended TLMPS team. The Caretaker, Kathleen & Cleaner, Janette, for their diligence in providing additional cleaning and safety practices in the past 18 months, minimising the risk of spreading coronavirus. The kitchen team, Donna and Elizabeth, for their flexibility during the COVID months.

And finally,

We hope to hold fundraising events, have school trips and even a Christmas party, all of which will continue to be subject to the government's restrictions.

Best wishes

Lisa Jackson
Headteacher

SCHOOL HOLIDAYS 2021/2022

Holiday	Closing Date	Date Re-open for Teaching Purposes
Autumn Half-Term 2021 (1 week)	Friday 22 October 2021	Monday 1 November 2021
Christmas 2021 (2 weeks 3 days)	Thursday 16 December 2021	Wednesday 5 January 2022
Spring Half-Term 2022 (1 week 1 day)	Thursday 17 February 2022	Monday 28 February 2022
Easter 2022 (2 weeks)	Friday 8 April 2022	Monday 25 April 2022
May Day 2022 (1 day)	Friday 29 April 2022	Tuesday 3 May 2022
Summer Half-Term 2022 (1 week)	Friday 27 May 2022	Monday 6 June 2022
Summer 2022 (6 weeks)	Wednesday 20 July 2022	To be determined

Important Note: the following dates have been agreed as INSET days for school staff and the school will be closed to pupils:

Friday 17 December 2021

Tuesday 4 January 2022

Friday 18 February 2022

Thursday 21 July 2022

NB Leave of Absence in term time will not be granted unless there are circumstances deemed exceptional by the Headteacher. For all absence requests, a Leave of Absence form must be completed prior to the time requested. Please note that holidays during term time will not be granted.